

PRESSURE TRANSMITTER (DIRECT MOUNT TYPE)

DATA SHEET

FKP...5/FDP...5

The FCX -AIII pressure transmitter (direct mount type) accurately measures pressure and converts it into an output signal of 4~20mA DC.

The transmitter utilizes a unique micromachined capacitance silicon sensor with state-of-the-art microprocessor technology to provide exceptional performance and functionality. Its small volume, light weight, good environment adaptability, and applicable to all fields. If using the hand held communicator (sold separately), it can be set and display via remote operation, without affecting the DC 4~20mA output signal of transmitter. FCX-AIII series transmitters with safety function have obtained the certificate of SIL certification by TÜV.

Features

1. High accuracy
Pressure transmitter can be carried out with high accuracy measurement in the range of 8.125 ~ 50000kPa.
Standard accuracy: $\pm 0.1\%$ Accuracy(50MPa): $\pm 0.2\%$
High accuracy(optional): $\pm 0.05\%$
2. Excellent operability and easy to use
It has an excellent operability and easy to use in any application.
 - All range meet the requirements of explosion-proof.
 - 5-digit digital indicator
 - Stainless steel AMP case
 - Built-in RFI filter and lightning arrester
 - Built-in local configurator with 3 push buttons
3. The transmitter can communicate using FUJI, HART, communication protocol, and also can use FOUNDATION FIELDBUS or PROFIBUS protocol after changing the electronic circuit.



FKP

Specifications

Functional specifications

- Measured fluid: Liquid, gas, or vapor
- Range, operating pressure, and overrange limit:

| Type | Operating pressure [MPa] | Span limit [kPa] | | Range limit [kPa] | | Overrange limit [MPa] |
|------------------|--------------------------|------------------|-------|--|-------|-----------------------|
| | | Min. | Max. | Lower | Upper | |
| FKP□01 FDP□01 | -0.1 ~ 0.13 | 8.125 | 130 | According to the lower range limit of fill fluid | 130 | 1 |
| FKP□02 FDP□02 | -0.1 ~ 0.5 | 31.25 | 500 | | 500 | 1.5 |
| FKP□03 FDP□03 | -0.1 ~ 3 | 187.5 | 3000 | | 3000 | 9 |
| FKP□04 FDP□04 | -0.1 ~ 10 | 625 | 10000 | | 10000 | 15 |
| FKP□05 FDP□05 | -0.1 ~ 50 | 3125 | 50000 | | 50000 | 75 |

- Process temperature, Lower range limit: Refer to Figure 1

| Fill fluid | 13th digit Code | Process Temperature | Lower range limit |
|-----------------|-----------------|---------------------|----------------------|
| Silicone oil | Y, G, N | -40 ~ + 120°C | 2.7kPa abs 以上 |
| Fluorinated oil | A | -20 ~ + 80°C | Atmospheric pressure |

- Remote function: Refer to table 1
Note: HHC's version must be higher than 7.0 (or FXW□□□□1-□4).
- Output signal: (1)FKP: DC4~20mA+HART protocol
(2)FDP: FOUNDATION Fieldbus protocol or PROFIBUS-PA
- Allowable load resistance: 0 ~ 600Ω (at DC 24V)
(Refer to figure 2) For communication with HHC, min. of 250Ω resistor is required.
- Power supply:

| | |
|------------------|--------------|
| General | DC10.5 ~ 45V |
| Intrinsic safety | DC10.5 ~ 26V |
| With arrester | DC10.5 ~ 32V |
- Condition of communication line: Length: up to 2km
(0.75 ~ 1.25mm² Using twisted pair cable when instrument control cable is more than 1km.
Load resistance: 250 ~ 600Ω
(DC24V, including resistance of cable)
Load capacitance: 0.22μF or less
Load inductance: 3.3mH or less
spacing with power line: 15cm or more
(Please avoid parallel wiring.)
Note: Line condition of intrinsic safety and explosion-proof is different, please refer to the instruction manual.
- Saturation current: Upper limit 20.0 ~ 22.5mA(variable)
Lower limit 3.2 ~ 4.0mA(variable)
- Damping: The time constant is adjustable from 0.06 to 32 seconds.
Adjustment function: Zero and span are adjustable by the external adjustment screw, or by local configurator with 3 push buttons, or by HHC.
- Zero elevation/suppression: Zero can be elevated or suppressed within the range of -0.1 MPa to upper range limit.
- Normal/reverse action: Selectable from HHC or LCD unit with local adjustment function.

- Burnout direction: Output hold
Output 20.0 ~ 22.5mA (variable)
Output 3.2 ~ 4.0mA (variable)
(Settable in increments of 0.1mA with HHC or local configurator unit with LCD display.)
- Explosion proof: Refer to table 8
- Ambient temperature: -40 ~ +85°C

| |
|--|
| With arrester: -40 ~ +60°C |
| Fluorinated oil fill: -10 ~ +60°C |
| Note: The optimum operating temperature of digital indicator is -30 ~ +80°C, response is slow below -30°C. |
- Storage temperature: -40 ~ +90°C
- Weather resistance: DIN 40040 GPC
- EMC applicable standard: EN61326-1: 2006 CE

Performance specifications

- Accuracy rating: (including linearity, hysteresis, repeatability)
For spans greater than 1/10 of URL: :
± 0.065% or
± 0.04%(21th code: H)
For spans below 1/10 of URL:
± (0.05 + 0.05 $\frac{0.1 \times \text{URL}}{x}$) %
- Ambient temperature effect: Changed per 28°C in the range of -40°C ~ +85°C.

| |
|--|
| Zero shift: ± (0.4+0.1 $\frac{\text{URL}}{x}$) % /28°C |
| Total shift: ± (0.475 + 0.1 $\frac{\text{URL}}{x}$) % /28°C |

In the formal : x : SPAN
URL : Upper range limit
- Overrange effect: Zero shift ±0.3% of URL for any overrange to maximum limit .
- Mounting position effect: 0.1kPa/10°
In case of 13th digit code"A"
(Treatment, Fill fluid), the influence value is 2 times of above.
- Supply voltage effect: ± 0.005% /1V(DC 16.1 ~ 45V)
- Insulation strength: 500VAC, 50/60Hz, 1 min, between circuit and earth.
- Insulation resistance: More than 100MΩ at 500V DC, between circuit and earth.
- Update rate: 60ms
- Response time: Time constant: 0.08s (at 23°C)
Dead time: approx. 0.12s
- Stability: Zero shift ±0.2% of upper range limit (URL) for 10 years. In case of 6th digit code "2","3","4"

Structure and material

- Materials:

| Material code | Detecting unit body | |
|---------------|---------------------|--------------------|
| | Seal diaphragm | Other wetted parts |
| V | SUS316L | SUS316 |
| H | Hastelloy-C | SUS316 |
- Amp case material: Aluminium alloy
- Amp case coating: Polyester coating silvery
(Amp case cover.....blue)
- Structure of case: Immersion protected type JIS C 0920
(Equivalent to IEC IP67, NEMA 6/6P)
- Outline dimension: According to the outline drawing.
- Weight: approx. 2.2kg
- Conduit connection: G^{1/2}, 1/2-14NPT, M20× 1.5, Pg13.5
(Refer to the model code table for details.)
- External terminal: M3.5 Screw
- Preocess connection: 1/2-14NPT (Refer to the model code table for details.)

| |
|---|
| But it can be converted to Rc ^{1/4} , Rc ^{1/2} , 1/4-18NPT, M20×1.5 by process adpater. |
|---|
- Mounting method: Dierctly mounting on the process pipe, or mounting on 50A(2B) pipe with U-bolt (according to model and specification).

Optional specifications

- Analog indicator: Built in amplifer unit
Class 2.5, moving-coil, movement 90°, 0 ~ 100% evenly divided scale or actual scale
- Digital indicator: Built in amplifer unit, 5 digit LCD and unit dispaly,0 ~ 100% scale display or actual scale display. Optimum operating temperature range: -30 ~ +80°C,
- Arrester: Built in amplifer unit
Lightning performance: 4kV(1.2× 50μs)
- Chlorine measurement: Fluorinated oil filling,available only for 7th digit code(material)"H","T".
- NACE specifications: H₂S treatment countermeasure based on NACE specification.
- Digital indicator: DIsplaying or setting the items of table 1 (with 3 push buttons) via 3 push buttons of digital indicator.

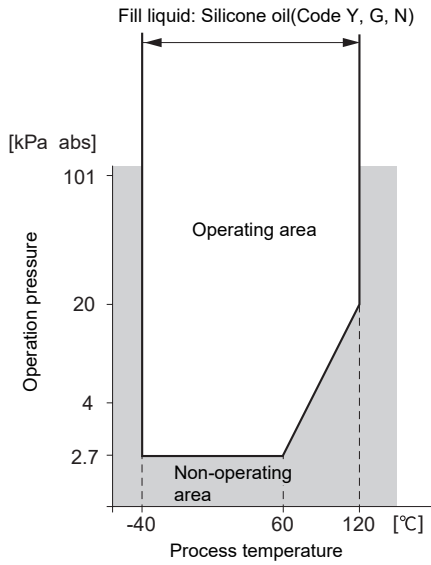
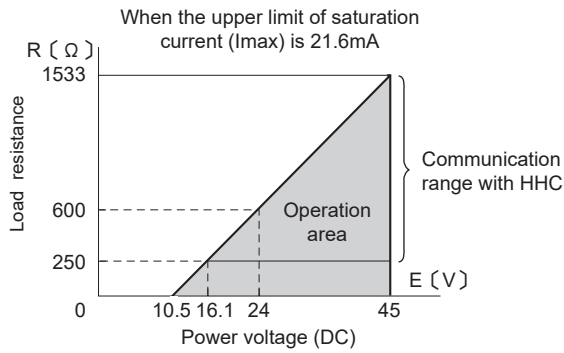


Figure 1 Relation between process temperature and operating pressure



(Note) The load resistance varies according to the upper limit of saturation current.

$$R (\Omega) = \frac{E (V) - 10.5}{(I_{max} (mA) + 0.9) \times 10^{-3}}$$

Figure 2 Operation area of power voltage and load resistance

The product conforms to the requirements of European EMC directive "Electromagnetic Compatibility Directive 2004/108/EC". The detail content is recorded in the technical construction file number TN5A0704. The applicable standards are as follows:



Emission list:
EN 61326-1 : 2006 Class A (Industrial location)

| Frequency range | Limits | Reference standard |
|-----------------|---|---|
| 30 ~ 230MHz | 40dB(μV/m) quasi peak, measured at 10m distance | EN55011:1998 +A1:1999 +A2:2002 (Group1 Class A) |
| 230 ~ 1000MHz | 47dB(μV/m) quasi peak, measured at 10m distance | |

Immunity requirements:
EN 61326-1 : 2006 Table2 (Industrial location)

| Phenomenon | Test value | Basic standard | P.C. |
|--------------------------------------|--|-------------------------------------|------|
| Electrostatic discharge | 2/4kV (Contact) 2/4/8kV (Air) | IEC 61000-4-2:1995 +A1:1998+A2:2001 | B |
| Electromagnetic field | 10V/m(80 ~ 1000MHz) 3V/m(1.4 ~ 2.0GHz) 1V/m(2.0 ~ 2.7GHz) 80%AM(1kHz) | IEC 61000-4-3:2002 +A1:2002 | A |
| Rated power frequency magnetic field | 30 A/m 50/60 Hz | IEC 61000-4-8:1993 +A1:2001 | A |
| Burst | 2kV | IEC 61000-4-4:2004 | B |
| Surge | 1.2/50μs(Voltage) 8.0/20μs(Current) 0.5/1kV line to line 0.5/1/2kV line to ground | IEC 61000-4-5:1995 +A1:2001 | B |
| Conducted RF | 0.15 ~ 80MHz 3V 80%AM(1kHz) | IEC 61000-4-6:1996 +A1:2001 | A |

Definition of performance criteria:
A: During testing, normal performance within the specification limits.
B: During testing, temporary degradation, or less of function or performance which is self-recovering.

Table1 Adjustment function

| No. | Items | HHC (Model:FXW)Note1) | | Local configurator (With 3 push buttons) | |
|-----|---------------------------------|-----------------------|-----|--|-----|
| | | Display | Set | Dispaly | Set |
| 1 | Tag No. | ○ | ○ | ○ | ○ |
| 2 | Type | ○ | ○ | ○ | ○ |
| 3 | Serial No. & Software Version | ○ | — | ○ | — |
| 4 | Engineering unit | ○ | ○ | ○ | ○ |
| 5 | Range Limit | ○ | — | ○ | — |
| 6 | Measuring range | ○ | ○ | ○ | ○ |
| 7 | Damping | ○ | ○ | ○ | ○ |
| 8 | Output mode | ○ | — | ○ | — |
| 9 | Burnout direction | ○ | ○ | ○ | ○ |
| A | Zero/span calibration | ○ | ○ | ○ | ○ |
| B | Calibration of output circuit | — | ○ | — | ○ |
| C | Measured data | ○ | — | ○ | — |
| D | Self-diagnosis | ○ | — | ○ | — |
| E | Printer function | ○ | — | — | — |
| F | Lock of adj. function | ○ | ○ | ○ | ○ |
| G | Indication of digital indicator | ○ | ○ | ○ | ○ |
| H | Linzealize | ○ | ○ | — | — |
| I | Rerange | ○ | ○ | ○ | ○ |
| J | Saturation current Write | ○ | ○ | ○ | ○ |
| K | protect | ○ | ○ | ○ | ○ |
| L | History | | | | |
| | -Calibration history | ○ | ○ | ○ | ○ |
| | -Temperature history | ○ | — | ○ | — |

Note1) The version of HHC must be higher than 7.0 when it supports FCX-All series transmitter(or FXW□□□□1-□4).

It can upgrade the version by changing ROM, please consult our company's windows or agency shop nearby for details.

Scope of delivery

Instrument body, pipe mounting bracket (according to type selection)

Related products

- Hand held communicator (Model: FXW):
Hand held, built-in battery, setting, display
For the details, please refer to data sheet (CSDS8-47).

Ordering information

- Model code
- Span
- Please select the direction of output (Notuse/OVER/UNDER) when the transmitter is fault (Burnout). If unspecified, it is Notuse.
- Please select the tag plate according to need.(up to 14 digit, consist of letters and numbers).

| Digit | Discription | Note | 1 | 2 | 3 | 4 | 5 | 6 | 7 | 8 | 9 | 10 | 11 | 12 | 13 | 14 | 15 | 16 | 21 | ← Digit No. |
|-------|--|--|---|---|---|---|---|---|---|---|---|----|----|----|----|----|----|----|----|-------------|
| | Pressure transmitter (direct mount type) DC4~20mA+HART FOUNDATION Fieldbus and PROFIBUS | | F | P | | | | | | | | | | | | | | | | |
| | | | F | K | P | 0 | 5 | | | | | | | | | | 0 | | | |
| | | | F | D | P | 0 | 5 | | | | | | | | | | 0 | | | |
| 16 | <Options> None Two valves manifold Two valves manifold | <Material> None SUS304 SUS316 | | | | | | | | | | | | | | | | | | |
| | | | | | | | | | | | | | | | | | | Y | | |
| | | | | | | | | | | | | | | | | | | A | | |
| | | | | | | | | | | | | | | | | | | B | | |
| 21 | <Other> High accuracy type Inspection report | Note6 | | | | | | | | | | | | | | | | | | H |
| | | | | | | | | | | | | | | | | | | | | F |

Note1) Please note when select Fieldbus or Profibus transmitter.

Note3) Available only for 4th digit code "5".

Note4) Available only for 4th digit code "6","8".

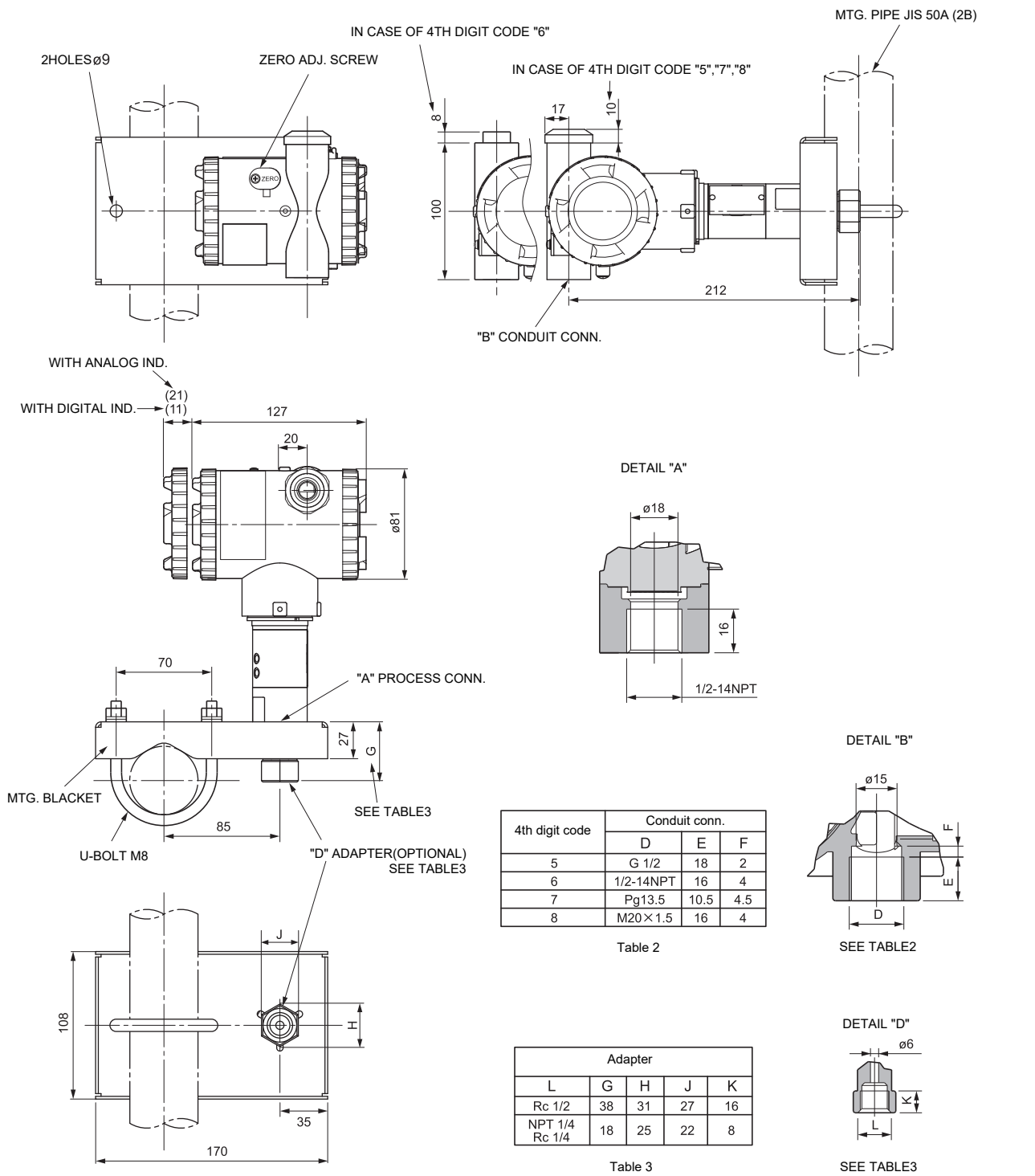
Note5) Available only for 4th digit code "6".

Note6) The digit is blank when not needed.

Note7) The 8th digit code can be selected as "S", this means that it's the transmitter with safety function. SIL2 capability for single transmitter use, SIL3 capability for dual transmitter use.

FKP

OUTLINE DIAGRAM (Unit: mm)



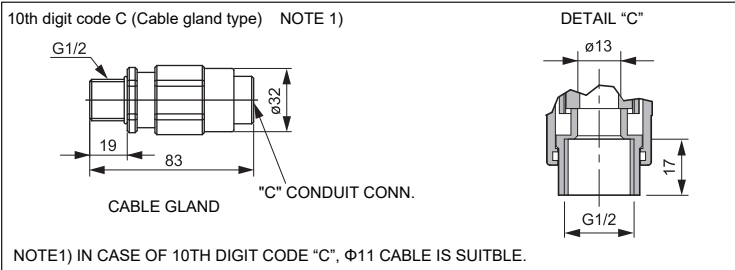
| 4th digit code | Conduit conn. | | |
|----------------|---------------|------|-----|
| | D | E | F |
| 5 | G 1/2 | 18 | 2 |
| 6 | 1/2-14NPT | 16 | 4 |
| 7 | Pg13.5 | 10.5 | 4.5 |
| 8 | M20×1.5 | 16 | 4 |

Table 2

| Adapter | | | | |
|-------------------|----|----|----|----|
| L | G | H | J | K |
| Rc 1/2 | 38 | 31 | 27 | 16 |
| NPT 1/4 Rc 1/4 | 18 | 25 | 22 | 8 |

Table 3

<OPTIONAL PARTS FOR FLAMEPROOF OF TIIS>



<SS TAG PLATE(OPTIONAL)> <CONNECTION DIAGRAM>

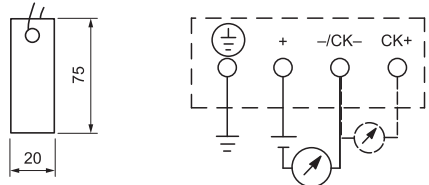


Table 4 Explosion proof

| Authorities | Intrinsic safety | | | | | | | | | | | | | | | | | | | |
|--------------|---|---------------|--|------|-----------|------------|---------|---------|---------------|------------|---------|---------------|------------|---------|---------------|---------|---------|---------------|---|---------|
| ATEX | Ex II 1 G Ex ia II C T5 Tamb = -40°C ~ +50°C Ex ia II C T4 Tamb = -40°C ~ +70°C | | | | | | | | | | | | | | | | | | | |
| | Entity Parameters: Ui = 28V, li = 94.3mA, Pi = 0.66W Ci = 26nF(without arrester), Li = 0.6mH(without analog indicator) Ci = 36nF(with arrester), Li = 0.7mH(with analog indicator) | | | | | | | | | | | | | | | | | | | |
| FM | Class I II III DIV.1 Groups A, B, C, D, E, F, G T4 Entity Type 4X | | | | | | | | | | | | | | | | | | | |
| | <table border="1"> <thead> <tr> <th colspan="2">Model</th> <th rowspan="2">Tamb</th> </tr> <tr> <th>9th digit</th> <th>13th digit</th> </tr> </thead> <tbody> <tr> <td>A, B, D</td> <td>Y, G, N</td> <td>-40°C ~ +85°C</td> </tr> <tr> <td>L, P, 1, 2</td> <td>Y, G, N</td> <td>-20°C ~ +80°C</td> </tr> <tr> <td>Q, S, 4, 5</td> <td>Y, G, N</td> <td>-20°C ~ +60°C</td> </tr> <tr> <td>E, F, H</td> <td>Y, G, N</td> <td>-40°C ~ +60°C</td> </tr> <tr> <td>-</td> <td>W, A, D</td> <td>-10°C ~ +60°C</td> </tr> </tbody> </table> <p>Entity Parameters: Vmax = 28V, Imax = 94.3mA, Pi = 0.66W, Ci = 35.98nF, Li = 0.694mH</p> | Model | | Tamb | 9th digit | 13th digit | A, B, D | Y, G, N | -40°C ~ +85°C | L, P, 1, 2 | Y, G, N | -20°C ~ +80°C | Q, S, 4, 5 | Y, G, N | -20°C ~ +60°C | E, F, H | Y, G, N | -40°C ~ +60°C | - | W, A, D |
| Model | | Tamb | | | | | | | | | | | | | | | | | | |
| 9th digit | 13th digit | | | | | | | | | | | | | | | | | | | |
| A, B, D | Y, G, N | -40°C ~ +85°C | | | | | | | | | | | | | | | | | | |
| L, P, 1, 2 | Y, G, N | -20°C ~ +80°C | | | | | | | | | | | | | | | | | | |
| Q, S, 4, 5 | Y, G, N | -20°C ~ +60°C | | | | | | | | | | | | | | | | | | |
| E, F, H | Y, G, N | -40°C ~ +60°C | | | | | | | | | | | | | | | | | | |
| - | W, A, D | -10°C ~ +60°C | | | | | | | | | | | | | | | | | | |
| CSA | Class I Div.1 Groups A, B, C, D Class II Div.1 Groups E, F, G Class III Div.1 | | | | | | | | | | | | | | | | | | | |
| | Temp code T5 Tamb max = +50°C Temp code T4 Tamb max = +70°C Entity Parameters: Vmax = 28V Imax = 94.3mA Ci = 25nF(without arrester), Li = 0.6mH(without analog indicator) Ci = 36nF(with arrester), Li = 0.7mH(with abalig indicator) | | | | | | | | | | | | | | | | | | | |
| TIIS | Ex ia IIC T4 Tamb max = +60°C Entity Parameters: Ui = 28V, li = 94.3mA, Pi = 0.66W, Ci = 38.4nF, Li = 0.694mH | | | | | | | | | | | | | | | | | | | |
| IECEX Scheme | Ex ia II C T4 Tamb = -40°C ~ +70°C Ex ia II C T5 Tamb = -40°C ~ +50°C | | | | | | | | | | | | | | | | | | | |
| | Entity Parameters: Ui = 28V li = 94.3mA Pi = 0.66W Ci = 26nF(without arrester), Li = 0.6mH(without analog indicator) Ci = 36nF(with arrester), Li = 0.7mH(with abalig indicator) | | | | | | | | | | | | | | | | | | | |
| NEPSI | Ex ia IIC T4 Ex d IIB+H2T6/Ex ia IIC T4 | | | | | | | | | | | | | | | | | | | |
| | <table border="1"> <thead> <tr> <th colspan="2">Model</th> <th rowspan="2">Tamb</th> </tr> <tr> <th>9th digit</th> <th>13th digit</th> </tr> </thead> <tbody> <tr> <td>A, B, D</td> <td>Y, G, N</td> <td>-40°C ~ +85°C</td> </tr> <tr> <td>L, P, 1, 2</td> <td>Y, G, N</td> <td>-20°C ~ +80°C</td> </tr> <tr> <td>Q, S, 4, 5</td> <td>Y, G, N</td> <td>-20°C ~ +60°C</td> </tr> <tr> <td>E F H</td> <td>Y, G, N</td> <td>-40°C ~ +60°C</td> </tr> <tr> <td>-</td> <td>W, A, D</td> <td>-10°C ~ +60°C</td> </tr> </tbody> </table> <p>Entity Parameters: Ui = 42.4V, li = 113mA, Pi = 1W, Ci = 35.98nF, Li = 0.694mH</p> | Model | | Tamb | 9th digit | 13th digit | A, B, D | Y, G, N | -40°C ~ +85°C | L, P, 1, 2 | Y, G, N | -20°C ~ +80°C | Q, S, 4, 5 | Y, G, N | -20°C ~ +60°C | E F H | Y, G, N | -40°C ~ +60°C | - | W, A, D |
| Model | | Tamb | | | | | | | | | | | | | | | | | | |
| 9th digit | 13th digit | | | | | | | | | | | | | | | | | | | |
| A, B, D | Y, G, N | -40°C ~ +85°C | | | | | | | | | | | | | | | | | | |
| L, P, 1, 2 | Y, G, N | -20°C ~ +80°C | | | | | | | | | | | | | | | | | | |
| Q, S, 4, 5 | Y, G, N | -20°C ~ +60°C | | | | | | | | | | | | | | | | | | |
| E F H | Y, G, N | -40°C ~ +60°C | | | | | | | | | | | | | | | | | | |
| - | W, A, D | -10°C ~ +60°C | | | | | | | | | | | | | | | | | | |

| Authorities | Flameproof | | | | | | | | | | | | | | | | | | | | |
|------------------|---|---------------|--|------|-----------|------------|---------|---------|---------------|------------|---------|---------------|------------|---------|---------------|---------|---------|---------------|---|---------|---------------|
| ATEX | Ex II 2 GD EEx d II C T6 IP66/67 T85°C Tamb = -40°C ~ +65°C EEx d II C T5 IP66/67 T100°C Tamb = -40°C ~ +85°C | | | | | | | | | | | | | | | | | | | | |
| FM | Class I Div.1 Groups B, C, D T6 Type 4X Class II III Div.1 Groups E, F, G T6 Type 4X Tamb max = +60°C | | | | | | | | | | | | | | | | | | | | |
| CSA | Class I Div.1 Groups C, D Class II Div.1 Groups E, F, G Class III Div.1 Note) "Seal Not Required" enclosure is allowed. | | | | | | | | | | | | | | | | | | | | |
| TIIS | Ex do IIB+H2 T4 Tamb max = +60°C Maximum process temp. = +120°C | | | | | | | | | | | | | | | | | | | | |
| IECEX Scheme/SAA | Ex d II C T5 IP66/67 Tamb = -40°C ~ +85°C Ex d II C T6 IP66/67 Tamb = -40°C ~ +65°C | | | | | | | | | | | | | | | | | | | | |
| NEPSI | Ex d II B+H2 T6 Tamb = -40°C ~ +60°C | | | | | | | | | | | | | | | | | | | | |
| Authorities | Type n Nonincendive | | | | | | | | | | | | | | | | | | | | |
| ATEX | Ex II3 GD EEx nL IIC T5 Tamb = -40°C ~ +50°C EEx nL IIC T4 Tamb = -40°C ~ +70°C Specific Parameters: Model without arrester: Ui=42.4V, li=113mA, Pi=1W, Ci=25.18nF, Li=0.694mH Model with arrester: Ui=32V, li=113mA, Pi=1W, Ci=35.98nF, Li=0.694mH | | | | | | | | | | | | | | | | | | | | |
| | EEx nAL IIC T5 Tamb = -40°C ~ +50°C EEx nAL IIC T4 Tamb = -40°C ~ +70°C Specific Parameters: Model without arrester: Umax=42.4V, Imax=113mA, Pmax=1W Model with arrester: Umax=32V, Imax=113mA, Pmax=1W | | | | | | | | | | | | | | | | | | | | |
| FM | Class I II III Div.2 Groups A, B, C, D, F, G T4 Entity Type 4X | | | | | | | | | | | | | | | | | | | | |
| | <table border="1"> <thead> <tr> <th colspan="2">Model</th> <th rowspan="2">Tamb</th> </tr> <tr> <th>9th digit</th> <th>13th digit</th> </tr> </thead> <tbody> <tr> <td>A, B, D</td> <td>Y, G, N</td> <td>-40°C ~ +85°C</td> </tr> <tr> <td>L, P, 1, 2</td> <td>Y, G, N</td> <td>-20°C ~ +80°C</td> </tr> <tr> <td>Q, S, 4, 5</td> <td>Y, G, N</td> <td>-20°C ~ +60°C</td> </tr> <tr> <td>E, F, H</td> <td>Y, G, N</td> <td>-40°C ~ +60°C</td> </tr> <tr> <td>-</td> <td>W, A, D</td> <td>-10°C ~ +60°C</td> </tr> </tbody> </table> | Model | | Tamb | 9th digit | 13th digit | A, B, D | Y, G, N | -40°C ~ +85°C | L, P, 1, 2 | Y, G, N | -20°C ~ +80°C | Q, S, 4, 5 | Y, G, N | -20°C ~ +60°C | E, F, H | Y, G, N | -40°C ~ +60°C | - | W, A, D | -10°C ~ +60°C |
| Model | | Tamb | | | | | | | | | | | | | | | | | | | |
| 9th digit | 13th digit | | | | | | | | | | | | | | | | | | | | |
| A, B, D | Y, G, N | -40°C ~ +85°C | | | | | | | | | | | | | | | | | | | |
| L, P, 1, 2 | Y, G, N | -20°C ~ +80°C | | | | | | | | | | | | | | | | | | | |
| Q, S, 4, 5 | Y, G, N | -20°C ~ +60°C | | | | | | | | | | | | | | | | | | | |
| E, F, H | Y, G, N | -40°C ~ +60°C | | | | | | | | | | | | | | | | | | | |
| - | W, A, D | -10°C ~ +60°C | | | | | | | | | | | | | | | | | | | |
| CSA | Class I Div.2 Groups A, B, C, D Class II Div.2 Groups E, F, G Class III Div.2 | | | | | | | | | | | | | | | | | | | | |
| | Temp code T5 Tamb max = +50°C Temp code T4 Tamb max = +70°C Entity Parameters: Vmax=28V, Ci=25.18nF (without arrester), Ci=35.98nF (with arrester), Li=0.694mH | | | | | | | | | | | | | | | | | | | | |

FKP